



2020 / 002 Catalogue. Products may change.
The Nomad Fox is a Registered Trademark and Logo.

Catalogue Index:

The Nomad Box	1	Nomad Waterproof Hard Cases	9	Nomad Tie Down Straps	18
The Nomad Box Security Roof Tray	4	Nomad Storage and Thermal Bags	12	Nomad Padlock	19
Security Roof Tray Mounting Kits	6	Nomad Aluminium Boxes	17	Nomad Box Labels	20

The Nomad Box

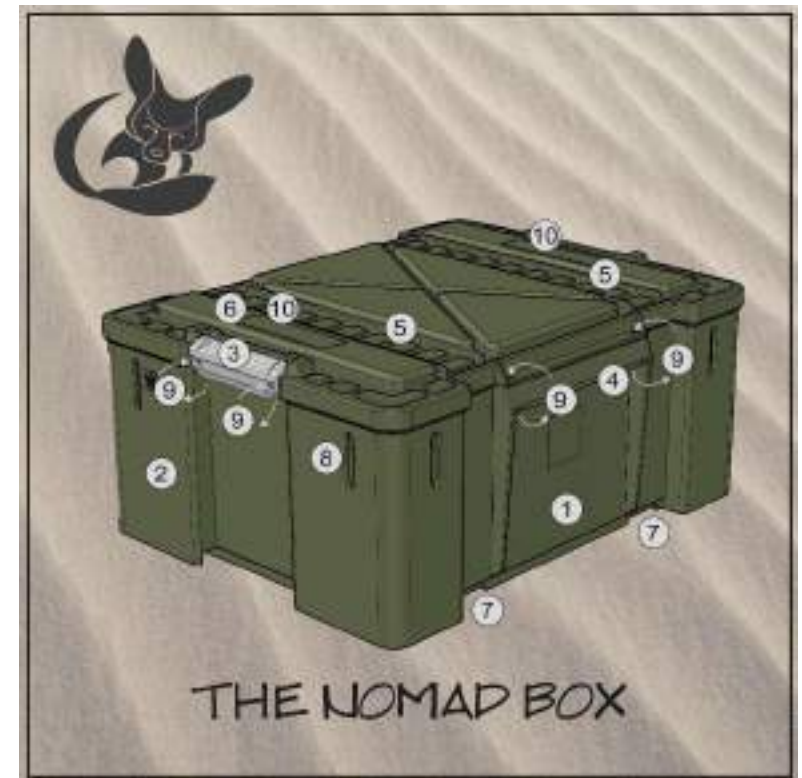


The **Nomad Box** is our own complete redesign of the popular ammo box, which we all love, but felt there was room for improvement.

The design concept still maintains its great stackability, with a great lock between boxes. Straight sides to maximize storage space (1). Double-walled reinforced corners for maximum strength when stacking heavy loads (2), and the right size for vehicle packing.

Plus:

- Rugged reinforced design.
- Two comfortable locking clasps on the short sides, which act as lift-and-open handles. (3)
- Two lift handles on the long sides. (4)
- Two main tracks for tie-down straps on the top in the width wise direction (5), and a tie-down notch above the clasps for lengthwise strapping. (6)
- Notches for tie-down straps on the box below. This means that you can strap boxes in different levels if needed. (7)
- Eight zip-tie holes to seal the box for extra safety in case of a fall or if you want to ship the box. (9)
- Long holes on the corner reinforcements that allow bungee cord hooks to be inserted to tie lighter items on the tops of the boxes. (8)
- Two rectangular boxes on the lid for label placement so you can identify the contents of the box. (10)
- High impact resistant and low temperature toughness injected Polypropylene copolymer (PPC).
- Scratch resistant lightly textured top and corners.
- Available in Black, Olive and Sand colour, all with light grey clasps.

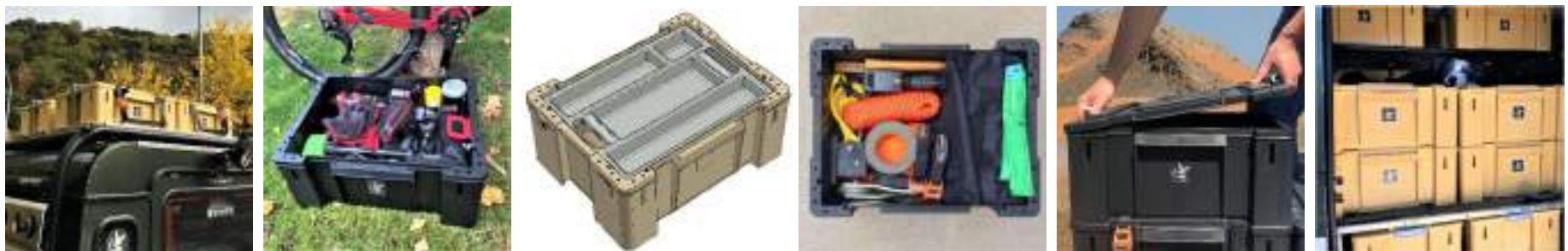


The **Nomad Box** has been designed not only with recreational purposes in mind. Built tough enough for professional and military uses as well. The box and top are manufactured with polypropylene copolymer (PPC), that is highly impact and stress crack resistant. This material also retains well its characteristics at low temperatures.



Our aim is to adapt The Nomad Box to a wide variety of uses with the intent to simplify vehicle packing. The Nomad Storage and Thermal Bags are an example. One of the more important design elements we are currently developing are interior trays and accessories for different uses. The interior slots in the wall of the box are designed with the intent to hang these trays and accessories.

Much thought has gone into the design and choice of materials used. Proper tightness and practicality of the locking clasps. Ease of loading the boxes in either lengthwise or width wise direction. Care has been taken that even if there are straps in the tracks of the two main tie-down tracks, you can still stack more boxes on top without interference. This means you can strap your boxes in different levels if needed. Attention has given in designing a longer and tight-fitting inner lip on the box top. The new mold, and well controlled injection parameters reduce warp and yield a better seal, making the Nomad Box more dust and water resistant.



Note:
Old
Roof
Tray
model.

See
our
new
Roof
Tray
design
below!



Designed and manufactured 100% by us in the EU, we feel The Nomad Box will satisfy the needs of the most demanding traveller and are confident it will become a classic in its own right.

Specifications:

Ref.	Product	Exterior Dimensions	Interior Dimensions	Weight
TNB-001BLK	Nomad Box Black	517x404x233 mm.	454x342x203 mm.	3,20 Kg.
TNB-002OLV	Nomad Box Olive	517x404x233 mm.	454x342x203 mm.	3,20 Kg.
TNB-002SND	Nomad Box Sand	517x404x233 mm.	454x342x203 mm.	3,20 Kg.

Nomad Box Security Roof Tray

Our **Security Roof Trays** are a great way to carry your **Nomad Boxes**. The 3 mm aluminum sheets are folded three times on each side, which gives the structure rigidity and strength while keeping weight down, only 5.15 Kg. High security tubular locks with dust caps and stainless-steel D rings. **Designed and built by us in the EU**



Features:

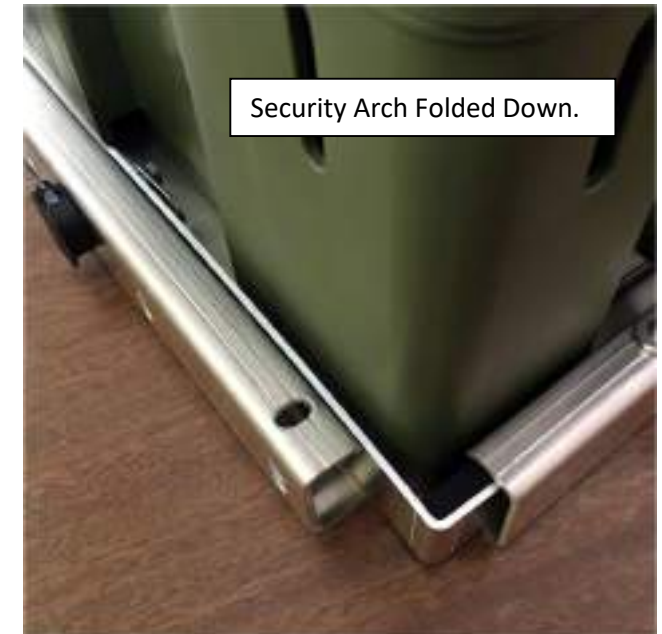
- 3 mm Aluminium sheet laser cut and folded with foldable security arch.
- Two high security tubular push button cam locks, 4 keys keyed alike, with dust caps.
- The locks cam bolts are fixed with permanent thread locker to prevent theft.
- Eight stainless-steel D rings with bolts fixed with anti-vibration thread-lock.
- Four holes on each side of the tray, so you can bolt two or more trays together.

The Roof Tray holds two Nomad Boxes in lengthwise manner. The tray is 109.5 cm. long and 45.5 cm. This disposition seemed to be the most adaptable dimension to width of the roof support systems of most vehicles, but the Roof Tray can also be mounted lengthwise on the vehicle.



The aluminium security arch is hooked into the two locks when in use, but when you don't feel the need to use the security arch, it can be folded 90° flat before the boxes are placed in the tray. The arch will not interfere with the boxes and or the tie-down straps. Hooked under the folded side of the tray it will not rattle or flip around. A 3 m. tie down strap will be enough to secure each box.

The D rings are bolted with a friction plate under sufficient pressure so they will not rattle if not strapped down, but will allow you to fold them up and down by hand. You can use the Aluminum Roof Tray as roof rack to secure with the tie-down straps other items as well, such as jerry cans, bags or other boxes. The laser cut Aluminium is left in its original finish and may present some cutting and folding marks, acquire a patina over time, but we feel that it is in this manner more resistant for rough conditions than if we were to paint it. Function and practicality first!



Specifications:

Ref.	Product	Tray dimensions.	Tray dimensions with hardware.	Weight
BRT-001	Box Roof Tray.	Ext.: 109x45,5x5 cm. Int.: 104,3x40,3x4,7 cm.	Ext.: 111,5 x 47 x 6 cm.	5,15 Kg.

Nomad Box Security Roof Tray - Mounting Kits

The Roof Tray is designed to be used on a variety of roof support systems with little or no need for added engineering on your part. The array of laser cut holes in the bottom of the tray are designed to bolt the tray to your roof support system, and are placed so as to not coincide with the ridges in the bottom of the Nomad Boxes. The bolt heads fall between ridges and in the space created between the bottom of the box and the base of the ridges. Since we intend the tray to be adaptable to any roof mounting system, from roof bars to roof racks and even roll bars with cargo racks, we can, if desired, supply the tray with two alternative bolt and retaining plate lengths.

See attached sketches for the two different mounting systems and chose which would best fit your needs. In some cases, you may need to fit a different bolt length to the mounting kit, but the rest of the hardware should be usable. It is optional, so you can also tackle the mounting of the tray on your own, if you wish. Some roof racks come with bolt slots and you should be able to directly bolt the Roof Tray to the roof rack with the appropriate bolts.

Designed and manufactured 100% by us in the EU, we feel The Nomad Box Security Roof Tray is a great way to carry your Nomad Boxes.

Specifications:

Mounting Kit 1 - System intended for roof racks with wide flat sections. This kit comes with long retaining plates and short bolts.

Ref.	Product	Description	Weight
BRT-MK1	Box Roof Tray Mounting Kit 1	Long Plate/ Sort Bolt	0,45 Kg.



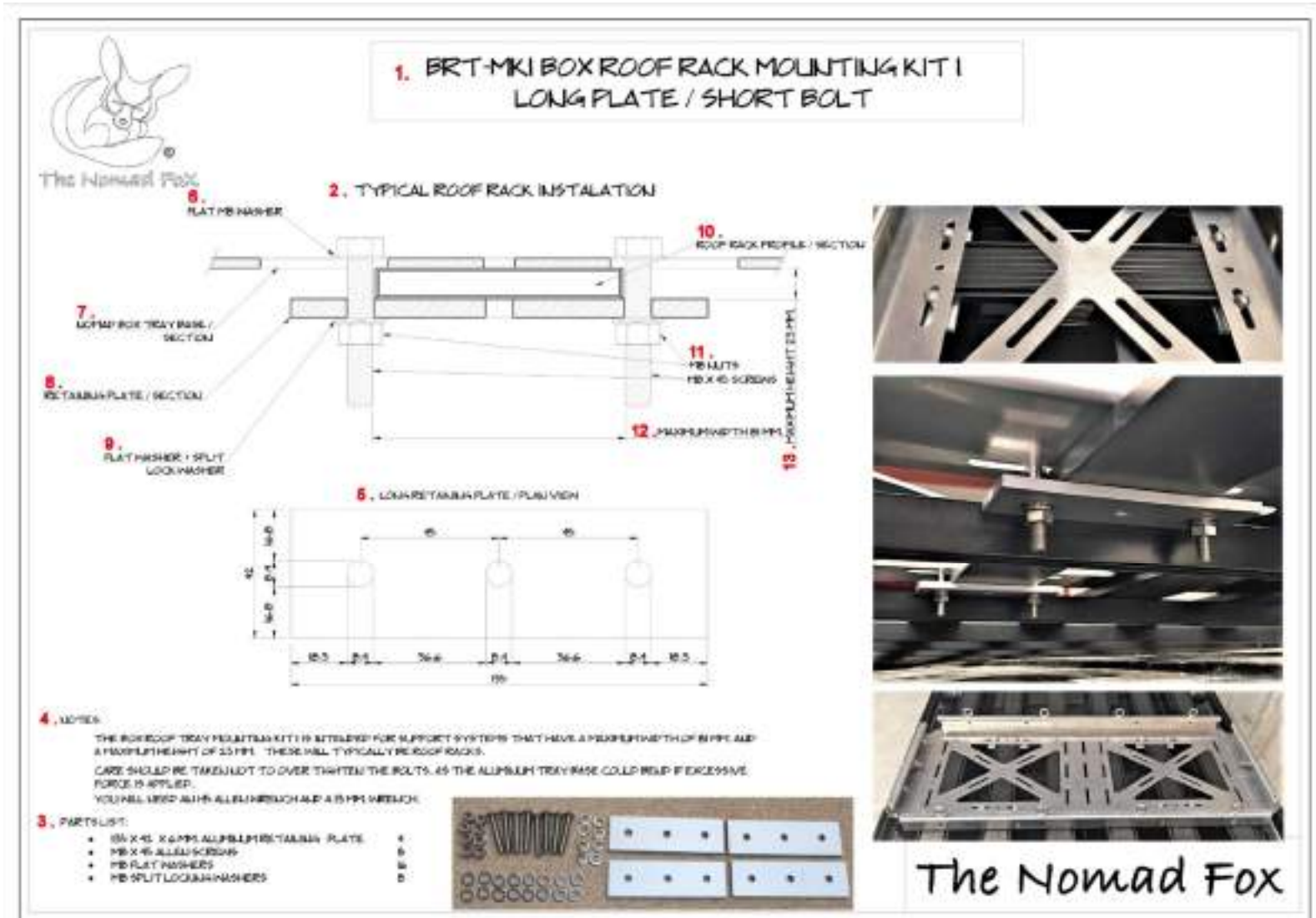
Mounting Kit 2 - System intended for roof bars and cargo racks and it comes with short retaining plates and long bolts.

Ref.	Product	Description	Weight
BRT-MK2	Box Roof Tray Mounting Kit 2	Short Plate/ Long Bolt	0,45 Kg.



Mounting Kit 1 - System intended for roof racks with wide flat sections. This kit comes with long retaining plates and short bolts.

1. Mounting Kit 1 for Roof Tray - Long Plates s / Short Bolts.
2. Typical installation on a roof rack.
3. Parts List.
 - 4 Aluminium plates 135 x 42 x 6 mm.
 - 8 Allen bolts M8 x 45 mm.
 - 16 M8 flat washers.
 - 8 Grove M8 washers.
4. Notes: The Ceiling Tray Assembly Kit 1 is for support systems that have a maximum width of 81 mm and a maximum height of 23 mm. These will typically be roof rails with slats. Care should be taken when tightening the screws with excessive force as they could bend the aluminium tray. You will need an Allen key H5 and a 13mm key.
5. Long Plate / Plan View.
6. M8 flat washer.
7. Roof Tray Base / Section.
8. Retaining Plate / Section.
9. Flat washer and split washer. M8



10. Roof Rack profile / Section.

11. M8 nuts / M6 x 45 mm screws.

12. Maximum width 81 mm.

13. Maximum height 23 mm.

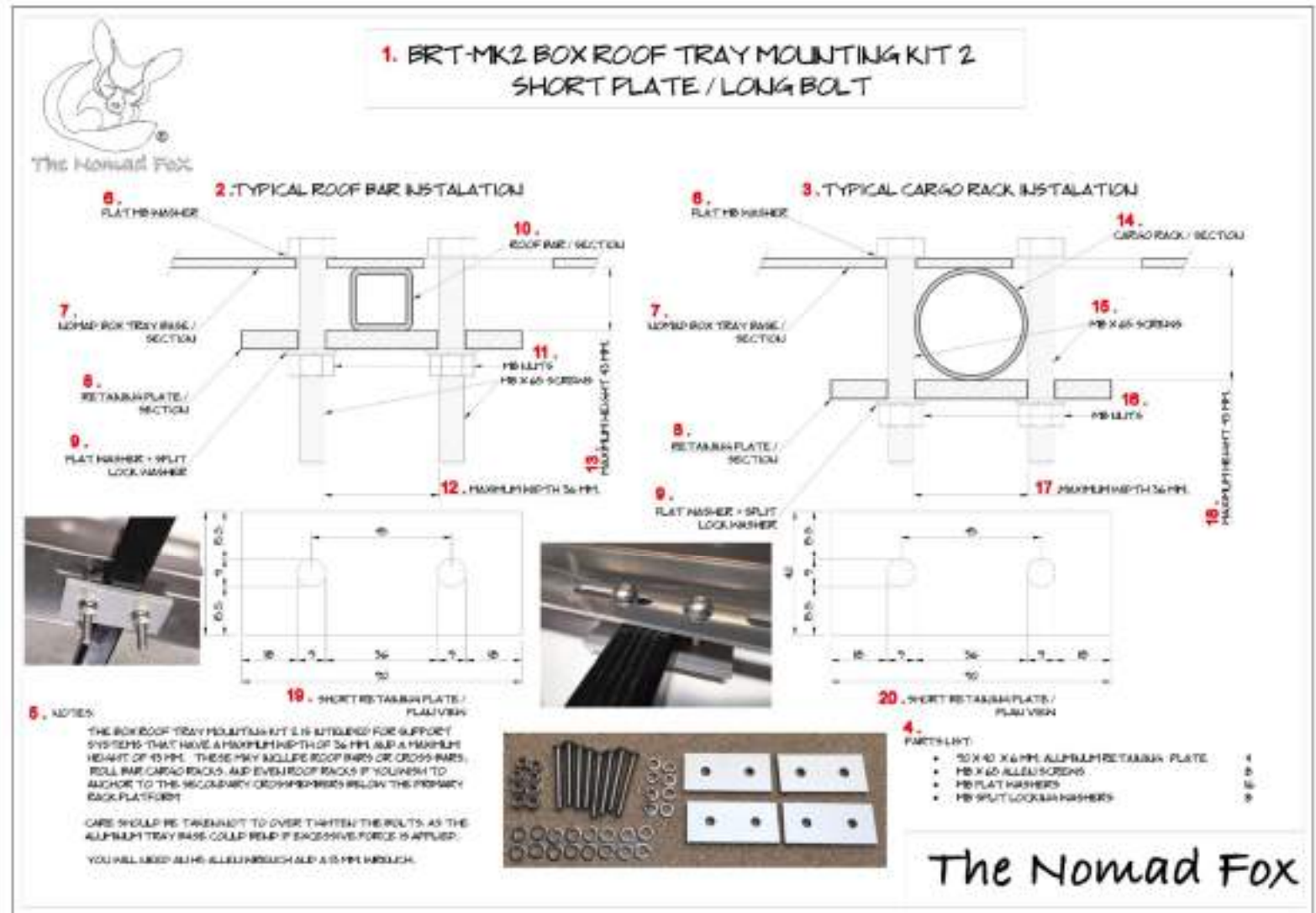
Mounting Kit 2 - System intended for roof bars and cargo racks and it comes with short retaining plates and long bolts.

1. Mounting Kit 2 for Roof Tray - Short Plates / Long Bolts.
2. Typical installation on roof bars.
3. Typical installation cargo rack.
4. Parts List.

- 4 Aluminium plates 90 x 40 x 6 mm.
- 8 Allen bolts of M8 x 65 mm.
- 16 M8 flat washers.
- 8 Grove M8 washers.

5. Notes: Mounting Kit 2 for Roof Tray is for support systems that have a maximum width of 36 mm and a maximum height of 43 mm. These will typically be roof bars and cargo racks, even roof racks, if you prefer to anchor at the level of secondary supports under the primary rack platform. Care should be taken when tightening the screws with excessive force as they could bend the aluminium tray. You will need an Allen wrench H5 and a 13mm spanner.

6. M8 flat washer.
7. Roof Tray Base / Section.
8. Retaining Plate / Section.
9. M8 Flat washer and split washer.
10. Roof Bar / Section.
11. M8 nuts / M6 x 65 mm screws.
12. Maximum width 36 mm.
13. Maximum height 43 mm.
14. Cargo rack / Section.



15. M6 x 65 screws.
16. M8 nuts.
17. Maximum width 36 mm.
18. Maximum height 43 mm.

Nomad Waterproof Hard Case

The high-quality **Nomad Waterproof Hard Case** is the ultimate protection for your delicate travel equipment. Our cases are made of high impact ABS plastic, and are IP67 waterproof.

They are dust proof and shock proof. The lid opens to a 97° self-balanced position. Case latches hold in the upright position while open. The latches open with a press and pull system to avoid accidental opening. They also have an additional safety switch and two holes for padlocks. These cases also come with an automatic pressure equalizing valve and hygrometer. The high visibility orange markings make them especially useful for emergency use. All our cases come with a pre-cut foam to allow you to shape the compartments to your equipment. They can be used in the field for scientific and research instrumentation; military, aviation and navigation use; photographic equipment; emergency rescue kits and outdoor sports gear.

Whether you are a professional or recreational traveller, they are no doubt your best choice to pack your most valuable and delicate gear under rough conditions.



Nomad Waterproof Hard Case 20 Litres.



Nomad Waterproof Hard Case 35 Litres.



Nomad Waterproof Hard Case 60 Litres.



Ref.	Product	Exterior dimensions	Interior dimensions	Weight
WHC4-2713	Nomad Waterproof Hard Case 20 Litre	458x347x204 mm.	400x270x(130+55) mm.	3,90 Kg.
WHC5-3316	Nomad Waterproof Hard Case 35 Litre	552x400x236 mm.	500x330x(160+55) mm.	6,00 Kg.
WHC6-4020	Nomad Waterproof Hard Case 60 Litre	653x469x277 mm.	600x400x(200+55) mm.	8,40 Kg.



Nomad Storage and Thermal Bags.

The **Nomad Bags** are made of high-quality Oxford cloth and are designed to fit into our Nomad Box or can be used separately. They are the perfect complement for multiple uses.

Both bags are foldable while not in use and are moisture and water resistant. The two handles make lifting the bag out of the box easy. Enough space has been left between the bag and the Nomad Box to ensure that a fully stuffed bag will easily slip into the box. The heavy-duty zipper is thought for overland use.

A practical way to keep and organize your more delicate items in the Nomad Boxes. Though and designed with overland use in mind.



The **Nomad Storage Bag** has rigid sides and bottom, and a fabric interior lining that is perfect for your more personal belongings, such as clothes and toiletry items. It can also be used when you want to keep lose items from making noise rolling back and forth in a half empty box. Side pockets have also been added to the ends of the bag. The Storage Bag comes with one divider, but more can be purchased separately.

Ref.	Product	Dimensions	Weight
NSB-01	Nomad Storage Bag 25,8 Litre	430x300x200 mm.	0,90 Kg.
NSB-D	Nomad Storage Bag Extra Divider	162x347x5 mm. (Plano)	0,10 Kg.



The **Nomad Thermal Bag** is lined with an insulating sheet finished with a food grade foil. It is intended for food use, but due to the interior foil lining, you can also use it for anything that may require to wipe the interior of the bag clean. This bag also comes with a shoulder strap, so it can be used as a picnic bag or to fetch supplies from the local market.

Ref.	Product	Dimensions	Weight
NTB-01	Nomad Thermal Bag 25,8 Litre	430x300x200 mm.	0,75 Kg.



Nomad Aluminium Boxes

Our **Nomad Aluminium Boxes** are an excellent choice to store items needed in overland travel. They are lightweight, corrosion resistant and extremely durable.

Our Aluminium Boxes are especially rugged as they are made in 1,5 mm. thick Aluminium pressed sheets. Most other Aluminium boxes typically use 1 mm. sheets. The handles are spring loaded and will fold down upon release. Their plastic cover ensures a good grip. The two retaining straps prevent damage to the hinges. Both draw-bolt catches have key locks and holes to fit padlocks. The hardened Aluminium corner pieces on the lid ensure that when boxes are piled one on top of the other, they stack snugly. The edge of the box has a rubber lip that ensures a tight seal and to avoid eventual damage to the lid upon repeated closing. A box with all the right details.

Always a classic in overland travel and extra tough.



Nomad Aluminium Box 40 Litre.



Nomad Aluminium Box 70 Litre.



Nomad Aluminium Box Set 40 and 70 Litres.





Ref.	Product	Exterior Dimensions	Interior Dimensions	Weight
NAB-102	Nomad Aluminium Box 40 Litre	435x330x275 mm.	412x308x260 mm.	4,10 Kg.
NAB-101	Nomad Aluminium Box 70 Litre	565x400x315 mm.	540x380x305 mm.	5,60 Kg.
NAB-100	Nomad Aluminium Box Set, 40 and 70 Litres.	435x330x275 mm. 565x400x315 mm.	412x308x260 mm. 540x380x305 mm.	9,70 Kg.

Nomad Tie Down Straps

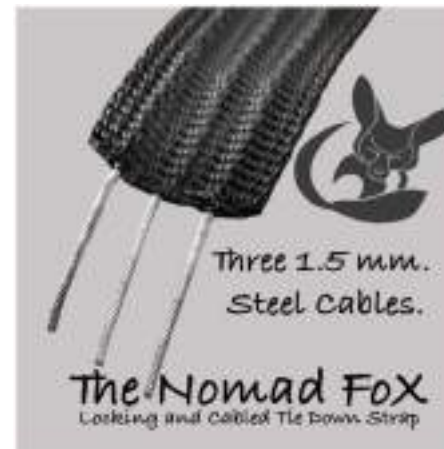
Our selection of **Nomad Tie Down Straps** will cover a good range of your cargo securement needs. All of our buckles are protected to prevent damage to your vehicle.

The Locking and Cabled Tie Down Strap is highly theft deterrent. The strap has three 1.5 mm. steel cables sewn into the strap. We've tested this strap repeatedly with a utility knife and were not able to do much damage to it. The grey buckle lock is made of impact resistant plastic and is rubberized for protection.

The Locking Tie Down Strap has the same locking buckle as our cabled version but in orange colour. This strap comes with our standard strap and is intended as an intermediate level theft deterrent. The advantage that the standard strap is that it is more flexible and manageable than the cabled version.

Our regular Tie Down Straps come with an orange rubber cover to prevent scratches and rattles.

Nomad Locking and Cabled Tie Down Strap, 5m. (1 Strap)



Nomad Locking Tie Down Strap, 5m. (2 per pack)



Nomad Tie Down Strap, 3m. (2 per pack)



Nomad Tie Down Strap, 5m. (2 per pack)



Ref.	Product	Dimensions	Weight
TDS-LC5M	Nomad Locking and Cabled Tie Down Strap 5m (1 per pack)	2,5 cm x 5 meters	0,35 Kg.
TDS-L5M	Nomad Locking Tie Down Strap 5m (2 per pack)	2,5 cm x 5 meters	0,60 Kg. For 2
TDS-3M	Nomad Tie Down Strap 3m (2 per pack)	2,5 cm x 3 meters	0,35 Kg. For 2
TDS-5M	Nomad Tie Down Strap 5m (2 per pack)	2,5 cm x 5 meters.	0,40 Kg. For 2

Nomad Padlock

The Nomad Padlock has a Copper Cylinder, with a steel plated chromium shackle and a nylon body cover. Impact and corrosion resistant. Resistant to UV light, heat and low temperatures. Key retaining cylinder ensures that the padlock is not left unlocked. Colour Black.

Ref.	Product	Body Size	Shackle Size	Weight
NPL-8522N	Nomad Padlock	45mm x 34.5mm x 20mm	38mm 316 SS steel shackle, diameter 4.5mm	0,78 Kg.



Nomad Box Labels

Our **Box Labels** are a practical way to identify the contents of all your boxes and cases. Made of exterior grade vinyl are easy to write on with a permanent marker. Six (6) labels per pack.

We chose to leave our labels blank so as you may custom identify the contents as you wish and in your own language. They will stand up to outdoor conditions perfectly. Being made out of vinyl, they will also peel off easily should you need to replace them with a different label. They are suitable for all types of boxes and cases, and on the Nomad Boxes they can be placed on any side or top, whatever side is most convenient for you.



Ref.	Product	Size
NBL-001	Nomad Box Label	12cm x 3cm



®

The Nomad Fox s.l.

Avenida José Antonio 85A
28490 Becerril de la Sierra, Madrid
SPAIN

CONTACT:

Web: <https://thenomadfox.com/>

Email: info@thenomadfox.com

Telephone: +34 687521514